

# Cryotherapy

an effective palliative therapy for painful metastatic bone tumors



## Unique iceball visibility allows precise control of the ablation zone throughout the cryotherapy procedure.<sup>1-6</sup>

- The ablation zone can be selectively shaped to match the tumor.<sup>1,2,4,5</sup>
- Monitoring the ablation margin reduces the risk of injury to adjacent critical structures.<sup>1-4</sup>
- Multiple cryoablation needles can simultaneously be activated to treat large metastases.<sup>1,3,6</sup>

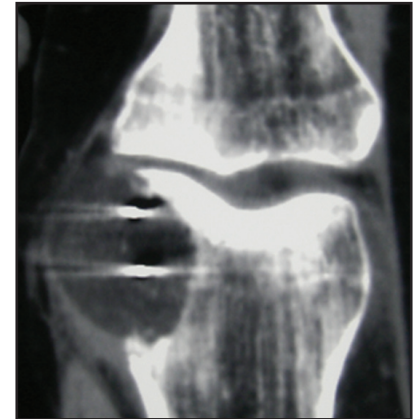
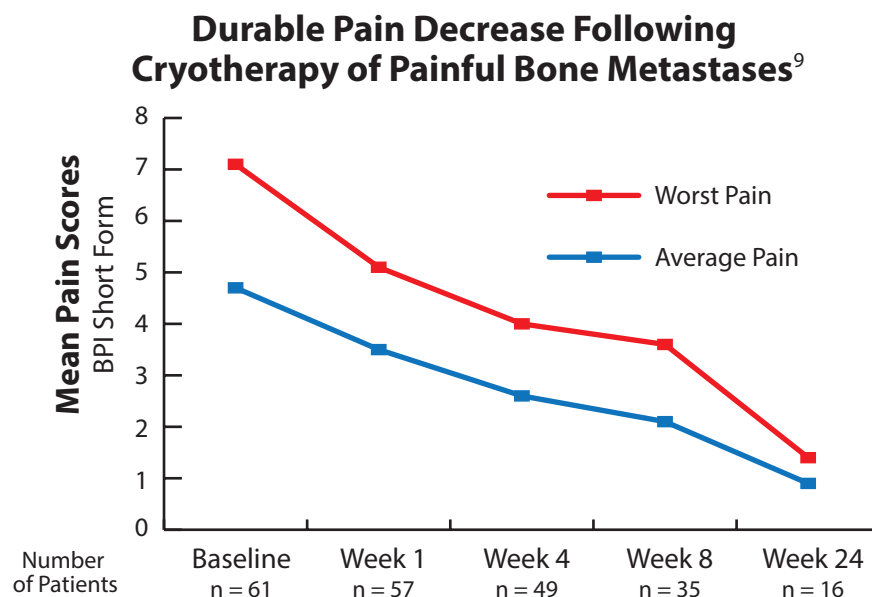
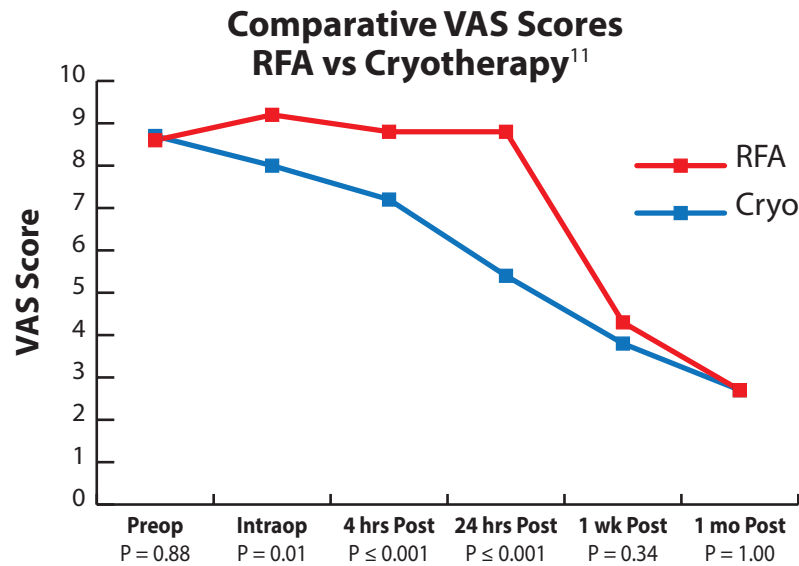


Image courtesy of **Afshin Gangi, MD, PhD**  
Department of Interventional Radiology  
University Hospital of Strasbourg, France

## Studies show clinically significant,<sup>7</sup> durable pain reduction for the majority of metastatic bone tumor patients treated with cryotherapy.<sup>1,8,9,10</sup>



# Compared to RFA, cryotherapy offers less peri-procedural pain<sup>11</sup> and a shorter hospital stay.<sup>12</sup>



Pain Score Collection Intervals: Preoperative, Intraoperative and Postoperative

## Serious complications are rare with cryotherapy.<sup>1,6,9</sup>

## The intrinsic anesthetic properties of cryotherapy allow performing a procedure under mild sedation.<sup>1,2,13</sup>

### References

- Callstrom MR, Kurup AN. Percutaneous ablation for bone and soft tissue metastases – why cryoablation? *Skeletal Radiol* 2009; 38:835-839.
- Gangi A, Buy X. Percutaneous Bone Tumor Management. *Semin Intervent Radiol* 2010; 27:124-136.
- Kurup AN, Callstrom MR. Ablation of Skeletal Metastases: Current Status. *J Vasc Interv Radiol* 2010; 21:S242-S250.
- Nazario J, Hernandez J, Tam AL. Thermal Ablation of Painful Bone Metastases. *Tech Vasc Interventional Rad* 2011; 14:150-159.
- Rybak LD. Fire and Ice: Thermal Ablation of Musculoskeletal Tumors. *Radiol Clin N Am* 2009; 47:455-469.
- Nazario J, Tam AL. Ablation of Bone Metastases. *Surg Oncol Clin N Am* 2011; 20:355-368.
- Farrar JT, Young Jr JP, LaMoreaux L, et al. Clinical importance of changes in chronic pain intensity measured on an 11-point numerical pain rating scale. *Pain* 2001; 94:149-158.
- Masala S, Schillaci O, Bartolucci AD, et al. Metabolic and clinical assessment of efficacy of cryoablation therapy on skeletal masses by <sup>18</sup>F-FDG positron emission tomography/computed tomography (PET/CT) and visual analogue scale (VAS): initial experience. *Skeletal Radiol* 2011; 40:159-165.
- Callstrom MR, Dupuy DE, Solomon SB, et al. Percutaneous Image-Guided Cryoablation of Painful Metastases Involving Bone: Multicenter Trial. *Cancer* 2013; 119:1033-1041.
- Tuncali K, Morrison PR, Winalski CS, et al. MRI-Guided Percutaneous Cryotherapy for Soft-Tissue and Bone Metastases: Initial Experience. *AJR* 2007; 189:232-239.
- Masala S, Guglielmi G, Petrella MC, et al. Percutaneous ablative treatment of metastatic bone tumours: visual analogue scale scores in a short-term series. *Singapore Med J* 2011; 52:182-189.
- Thacker PG, Callstrom MR, Curry TB, et al. Palliation of Painful Metastatic Disease Involving Bone With Imaging-Guided Treatment: Comparison of Patients' Immediate Response to Radiofrequency Ablation and Cryoablation. *AJR* 2011; 197:510-515.
- Allaf ME, Varkarakis IM, Bhayani SB, et al. Pain Control Requirements for Percutaneous Ablation of Renal Tumors: Cryoablation versus Radiofrequency Ablation - Initial Observations. *Radiol* 2005; 237:366-370.

**This application is not available in all markets**

### Indications for Use

The Galil Medical Cryoablation Systems are intended for cryoablative destruction of tissue during surgical procedures; various Galil Medical ancillary products are required to perform these procedures. Galil Medical Cryoablation Systems are indicated for use as a cryosurgical tool in the fields of general surgery, dermatology, neurology (including cryoanalgesia), thoracic surgery, ENT, gynecology, oncology, proctology and urology. These Systems are designed to destroy tissue (including prostate and kidney tissue, liver metastases, tumors, and skin lesions) by the application of extremely cold temperatures. A full list of specific indications can be found in the Galil Medical Cryoablation System User Manuals.

**Contraindications** There are no known contraindications.

### Warnings / Precautions / Adverse Events

A thorough understanding of the technical principles, clinical applications, and risks associated with cryoablation procedures is necessary before using Galil Medical products to conduct cryoablation. Use of such products should be restricted to use by or under the supervision of physicians trained in cryoablation procedures with a Galil Medical Cryoablation System.

A full list of the warnings, precautions, and adverse events can be found by referencing the respective device Instructions for Use document or Cryoablation System User Manual.

R<sub>x</sub> only

### Galil Medical Inc.

4364 Round Lake Road  
Arden Hills, MN 55112  
USA  
Tel: +1 651 287 5000  
+1 877 639 2796

### Galil Medical Ltd.

Tavor Building 1  
Yokneam  
Israel 2069203  
Tel: +972 (4) 9093200



[www.galilmedical.com](http://www.galilmedical.com)